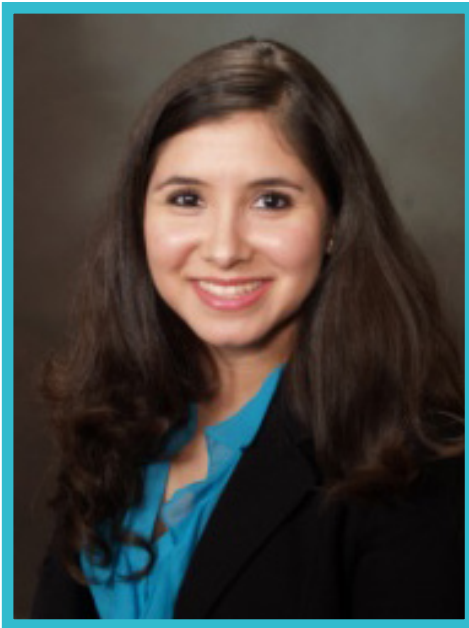




## Dr. Ana Soltero Lopez

CHANCELLOR'S POSTDOCTORAL RESEARCH ASSOCIATE

**“Examining the Role of ‘Illegality’ on the Socialization Practices and Identity Sense-Making among Undocumented Latina/o Students”**



Negative stereotypes associated with immigrants have resulted in the socially constructed notion of “illegality.” Taking a strength-based approach, this study applied Social Identity Theory (SIT) and Latina/o Critical Theory (LatCrit) to investigate if “illegality” impacted the identity, social interactions, and academic experiences and aspirations of 12 Latina/o undocumented students in Southern California. This talk will specifically focus on the socialization and identity findings, which suggest that “illegality” did guide the socialization practices of participants and exacerbated their class, sibling, partner, and student identities.

**WEDNESDAY, NOV. 5**  
**3:30-5:00PM**  
**1207 W. OREGON, URBANA**  
**ROOM 133**

[www.lls.illinois.edu](http://www.lls.illinois.edu)